

We Are  
**Novara**

**REQUEST DEMO**

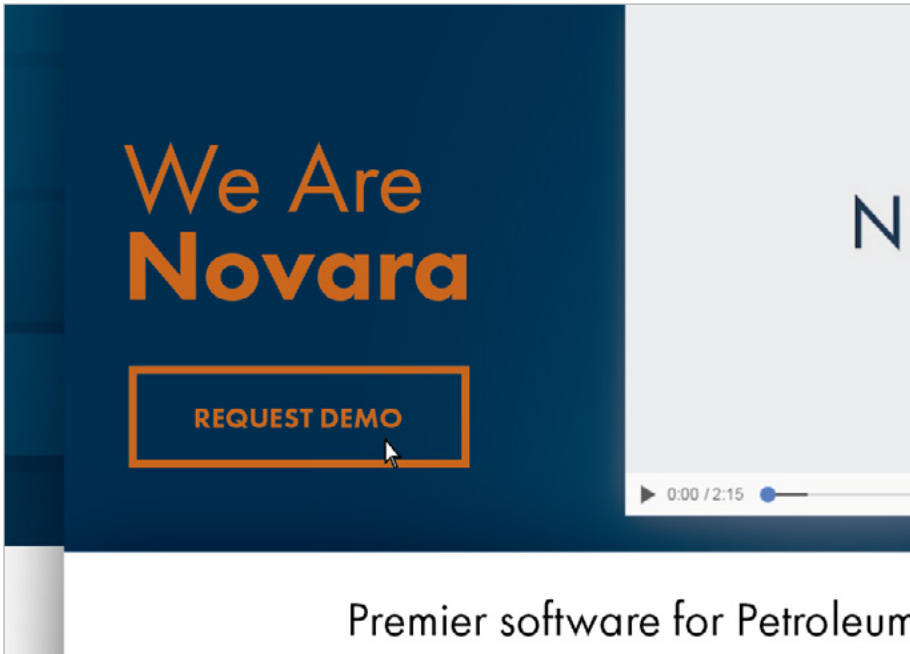


Premier software for Petroleum Pipelines and Utilities  
**DEPENDABLE. KNOWLEDGEABLE. AFFORDABLE.**



# Novara Website

## Home Page Details and Behaviors



Button turns Novara orange on hover over/click

Image on bottom buckets "zooms" in and text becomes Novara orange on hover over/click

[Similar to Esri's site](#)



We Are  
**Novara**

REQUEST DEMO

Learn about our Leadership  
and Partners

LEARN MORE

Novara Hub  
Events & Webinars  
Resources

**NOVARA**  
GeoSolutions  
A CHA Company

0:00 / 2:15



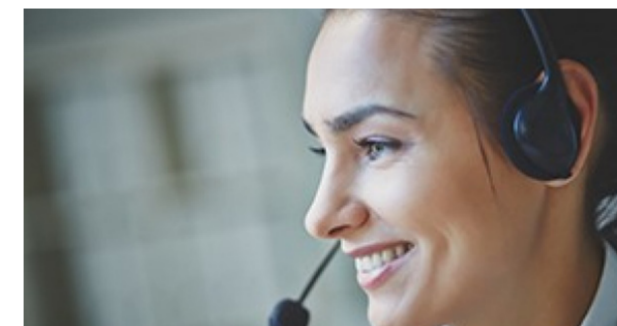
Premier software for Petroleum Pipelines and Utilities  
**DEPENDABLE. KNOWLEDGEABLE. AFFORDABLE.**



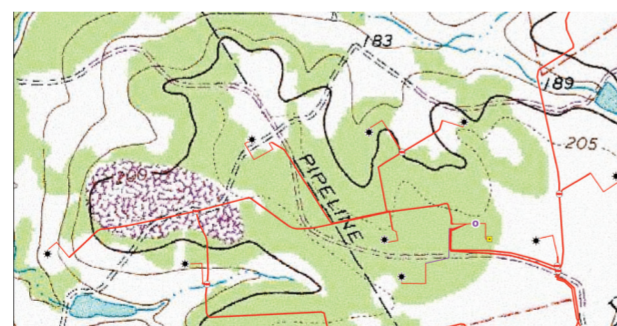
INTREPID 4.0



EVENTS & WEBINARS



TECHNICAL SUPPORT



SERVICES



INDUSTRIES



NOVARA HUB

**Novara GeoSolutions**  
A CHA Company

91 Longwater Circle, Suite 200  
Norwell MA 02061  
Phone: (781) 982-7700  
Fax: (339) 469-1056

Follow Us



Contact

Home

About

Industries

Services

Technology

Novara HUB

Resources

Events & Webinars

Technical Support

Career Opportunities



## About



- ABOUT
- Leadership**
- Partners
- Novara HUB
- Events & Webinars
- Resources

### Company History

More than 20 years ago, a group of talented geospatial and service professionals came together inside a small engineering company called Coler & Colantonio. Their task—their calling—was to develop a tool that would allow a diverse set of pipeline companies to manage their pipeline assets efficiently, cost-effectively and accurately.

And so, Intrepid was born—the thoughtful and determined marriage of engineering knowledge and software expertise. It rapidly became the industry leader.

Today, that development team and all the professionals from that small engineering company are part of CHA, a multi-faceted, global professional services firm that is one of America's largest engineering companies.

We continue to expand our flagship product but we are now backed by more than 1,000 experienced staff who are experts in Gas Distribution, Transportation and Railways, Water and Wastewater Systems, Construction, Aviation, Sport Facilities, and Institutions. We are taking our experience, heritage and talents to new industries.

It is the best of two worlds—those who know the systems and those who can develop the technology platforms to support them and make them better. Recognizing the unique marriage, it was time for Novara.

Our new name, our "new area" captures our evolution into a premier software company—dependable, knowledgeable, affordable, providing the information organizations need to grow and prosper.

You may think you know us but we are new. We have just begun.  
*We are Novara.*

"...dependable, knowledgeable, affordable, providing the information organizations need to grow and prosper."

### Leadership

Insert text about leadership here. More than 20 years ago, a group of talented geospatial and service professionals came together inside a small engineering company called Coler & Colantonio. Their task—their calling—was to develop.



**Neal O'Driscoll**  
President



**Robert Brook**  
Vice President Sales & Strategic Development



**Leslie Fullop**  
Associate Vice President  
Director Project Delivery



**Matthew Thomas**  
Associate Vice President  
Senior Industry Manager



**EJ Durgin**  
Associate Vice President  
Senior Industry Manager



**Jake Opdahl**  
Director of Sales

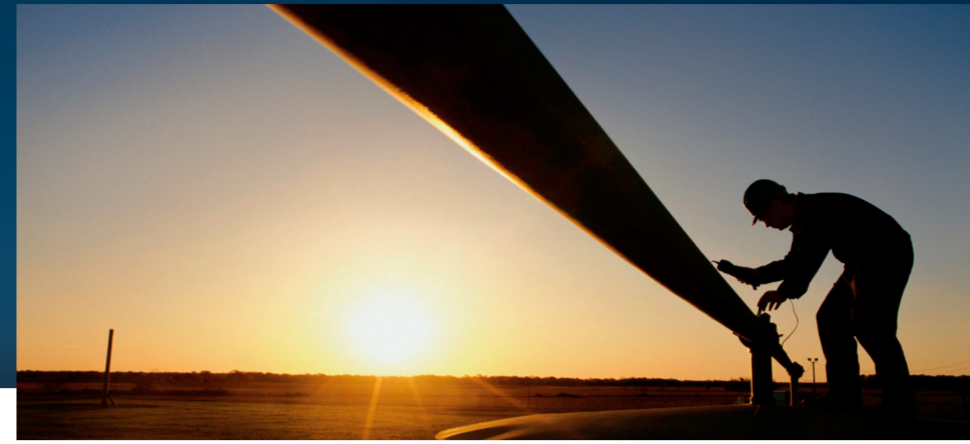


### Our Partners

Insert text about partners here. More than 20 years ago, a group of talented geospatial and service professionals came together inside a small engineering company called Coler & Colantonio. Their task—their calling—was to develop a tool that would allow a diverse set of pipeline companies to manage their pipeline.



- NOVARA HUB
- EVENTS & WEBINARS
- RESOURCES



## About

### Company History

More than 20 years ago, a group of talented geospatial and service professionals came together inside a small engineering company called Coler & Colantonio. Their task—their calling—was to develop a tool that would allow a diverse set of pipeline companies to manage their pipeline assets efficiently, cost-effectively and accurately.

And so, Intrepid was born—the thoughtful and determined marriage of engineering knowledge and software expertise. It rapidly became the industry leader.

Today, that development team and all the professionals from that small engineering company are part of CHA, a multi-faceted, global professional services firm that is one of America's largest engineering companies.

We continue to expand our flagship product but we are now backed by more than 1,000 experienced staff who are experts in Gas Distribution, Transportation and Railways, Water and Wastewater Systems, Construction, Aviation, Sport Facilities, and Institutions. We are taking our experience, heritage and talents to new industries.

It is the best of two worlds—those who know the systems and those who can develop the technology platforms to support them and make them better. Recognizing the unique marriage, it was time for Novara.

Our new name, our "new area" captures our evolution into a premier software company—dependable, knowledgeable, affordable, providing the information organizations need to grow and prosper.

You may think you know us but we are new. We have just begun.  
**We are Novara.**

"...dependable, knowledgeable, affordable, providing the information organizations need to grow and prosper."

### Leadership

Insert text about leadership here. More than 20 years ago, a group of talented geospatial and service professionals came together inside a small engineering company called Coler & Colantonio. Their task—their calling—was to develop.



**Neal O'Driscoll**  
President



**Robert Brook**  
Vice President Sales & Strategic Development



**Leslie Fullop**  
Associate Vice President  
Director Project Delivery



**Matthew Thomas**  
Associate Vice President  
Senior Industry Manager



**EJ Durgin**  
Associate Vice President  
Senior Industry Manager



**Jake Opdahl**  
Director of Sales



### Our Partners

Insert text about partners here. More than 20 years ago, a group of talented geospatial and service professionals came together inside a small engineering company called Coler & Colantonio. Their task—their calling—was to develop a tool that would allow a diverse set of pipeline companies to manage their pipeline.



NOVARA HUB

EVENTS & WEBINARS

RESOURCES



## Petroleum Pipeline

INDUSTRIES  
Petroleum Pipeline  
Utilities



### Seamless Information System

You need to store, organize and manage your vital pipeline asset information in a spatial framework. Intrepid will make this data accessible across your organization via the desktop, dashboards and even in the field.



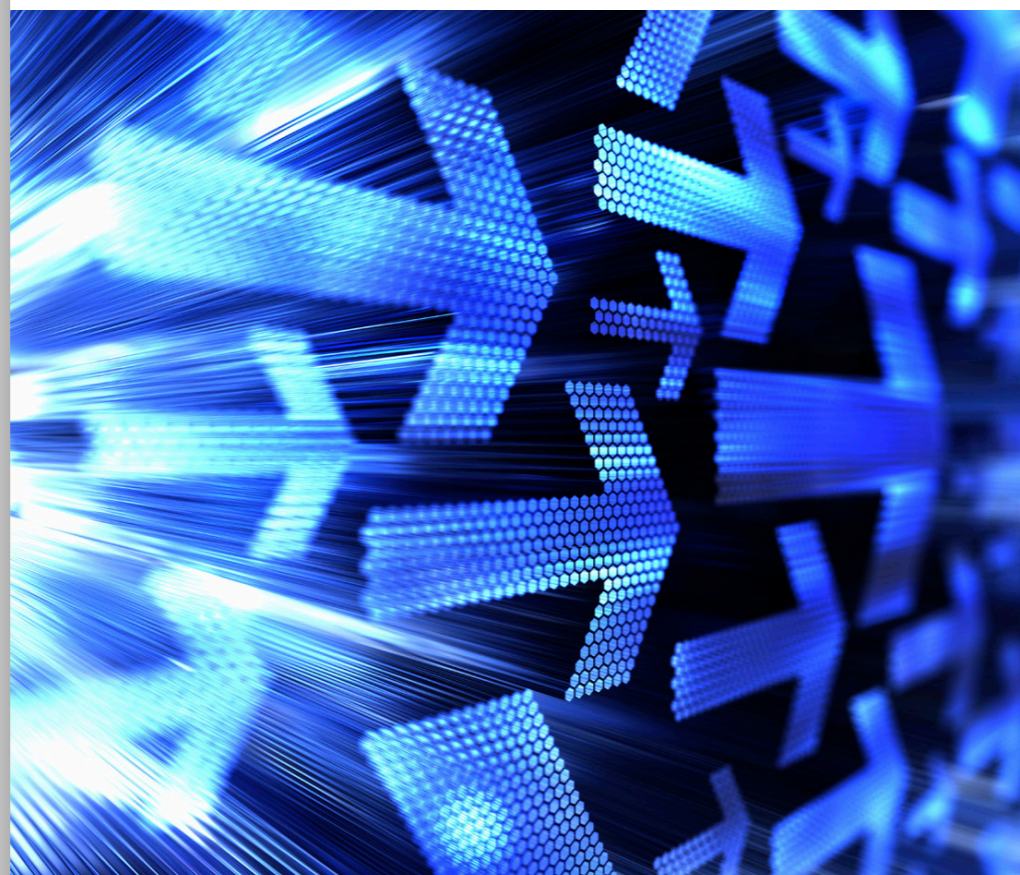
### More Than a Database

Storing data is only part of the story - you need to use, analyse and present it. Intrepid provides you with an array of mapping presentations, extensions, templates, mobile solutions and interfaces that can be configured to meet your needs.



### Built to Industry Standards

At the core of the Intrepid software is Esri's ArcGIS Platform, the world's most popular and powerful GIS software. Intrepid is configured to access data from any industry database, so it doesn't matter if you are using PODS...



### Data Maintenance

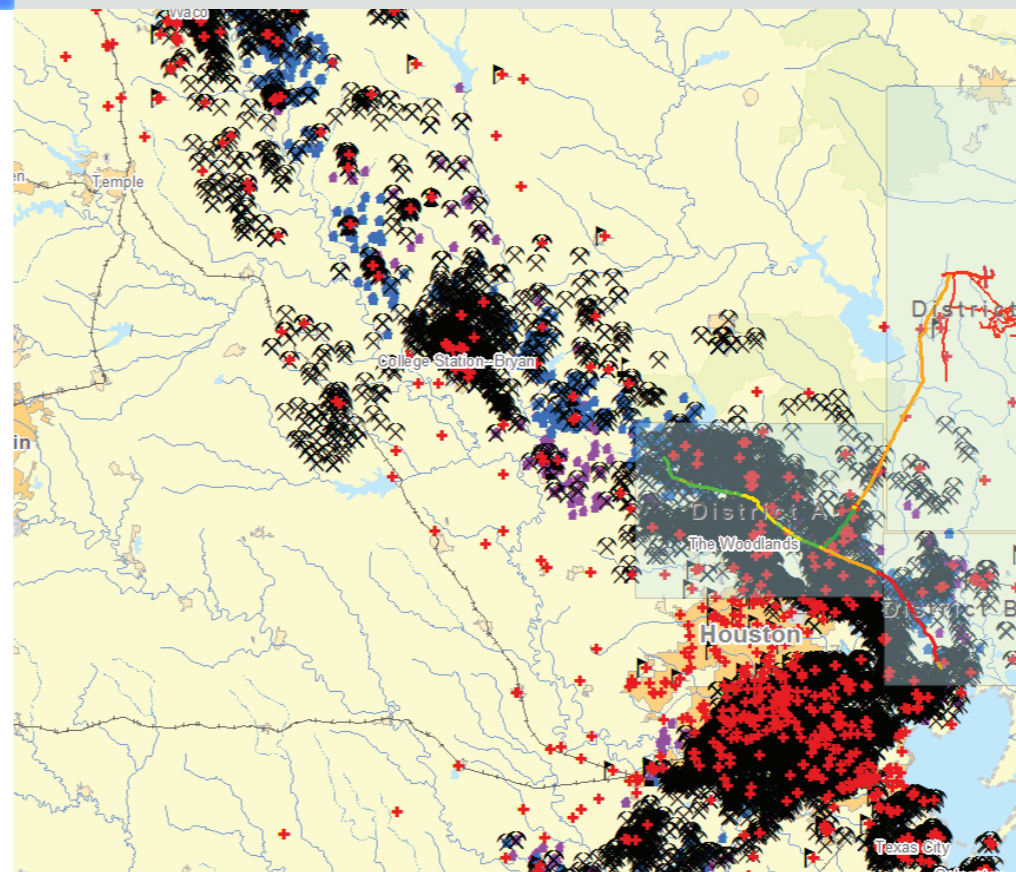
Intrepid users are guided through the processes and functions required for editing and maintaining pipeline data. These management functions include:

- Centerline creation and editing
- Pipeline re-routes
- Inline replacement
- Retirement/abandonment
- Facility details editing
- Add/edit site locations

### Data Analytics

Intrepid users are guided through the processes and functions required for editing and maintaining pipeline data. These management functions include:

- Query
- Establish Regulatory Compliance
- Produce Maps
- Report
- Import & Export Data



### Mobility

For that reason, the mobility of an asset management system is paramount. Whether collecting data in the field or viewing it from a satellite location, Intrepid provides the mobility that your staff needs to function:

- ccFirstSite - AsBuilt
- O&M Reports
- Mobile Asset Viewer

### PDFs for Download

NAME.PDF	NAME.PDF	NAME.PDF
NAME.PDF	NAME.PDF	NAME.PDF
NAME.PDF	NAME.PDF	NAME.PDF

# Novara Website

## Product Page Details and Behaviors



The image shows a product page for 'Petroleum Pipeline'. At the top, there is a dark blue header with the title 'Petroleum Pipeline' in orange. To the right of the title is a photograph of several large yellow pipes. Below the header is a sidebar on the left with the text 'INDUSTRIES', 'Petroleum Pipeline', and 'Utilities'. The main content area features three white boxes with orange borders, each containing an icon, a title, and a paragraph of text. The first box is titled 'Seamless Information System' and features a cloud icon with arrows. The second is titled 'More Than a Database' and features a location pin icon with layers. The third is titled 'Built to Industry Standards' and features a shield icon with a checkmark. Below these boxes is a section titled 'Data Maintenance' with a blue abstract background image of fiber optic cables. The text in this section is partially cut off.

### Petroleum Pipeline

INDUSTRIES  
Petroleum Pipeline  
Utilities

#### Seamless Information System

You need to store, organize and manage your vital pipeline asset information in a spatial framework. Intrepid will make this data accessible across your organization via the desktop, dashboards and even in the field.

#### More Than a Database

Storing data is only part of the story - you need to use, analyse and present it. Intrepid provides you with an array of mapping presentations, extensions, templates, mobile solutions and interfaces that can be configured to meet your needs.

#### Built to Industry Standards

At the core of the Intrepid software is Esri's ArcGIS Platform, the world's most popular and powerful GIS software. Intrepid is configured to access data from any industry database, so it doesn't matter if you are using PODS...

#### Data Maintenance

Intrepid users are guided through the processes and t

The rectangles in the first section under Petroleum Pipeline have a thicker outline when hovering over

[See Square website for similar example](#)

## Petroleum Pipeline



### Seamless Information System

You need to store, organize and manage your vital pipeline asset information in a spatial framework. Intrepid will make this data accessible across your organization via the desktop, dashboards and even in the field.



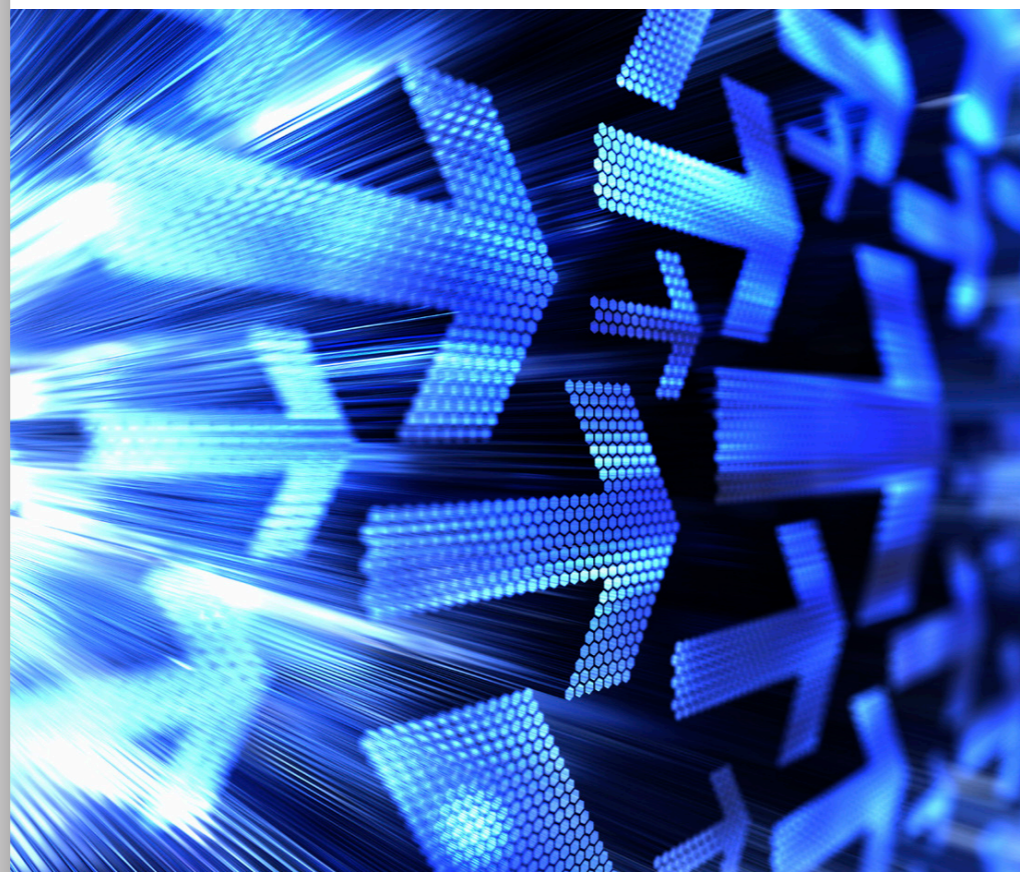
### More Than a Database

Storing data is only part of the story - you need to use, analyse and present it. Intrepid provides you with an array of mapping presentations, extensions, templates, mobile solutions and interfaces that can be configured to meet your needs.



### Built to Industry Standards

At the core of the Intrepid software is Esri's ArcGIS Platform, the world's most popular and powerful GIS software. Intrepid is configured to access data from any industry database, so it doesn't matter if you are using PODS...



### Data Maintenance

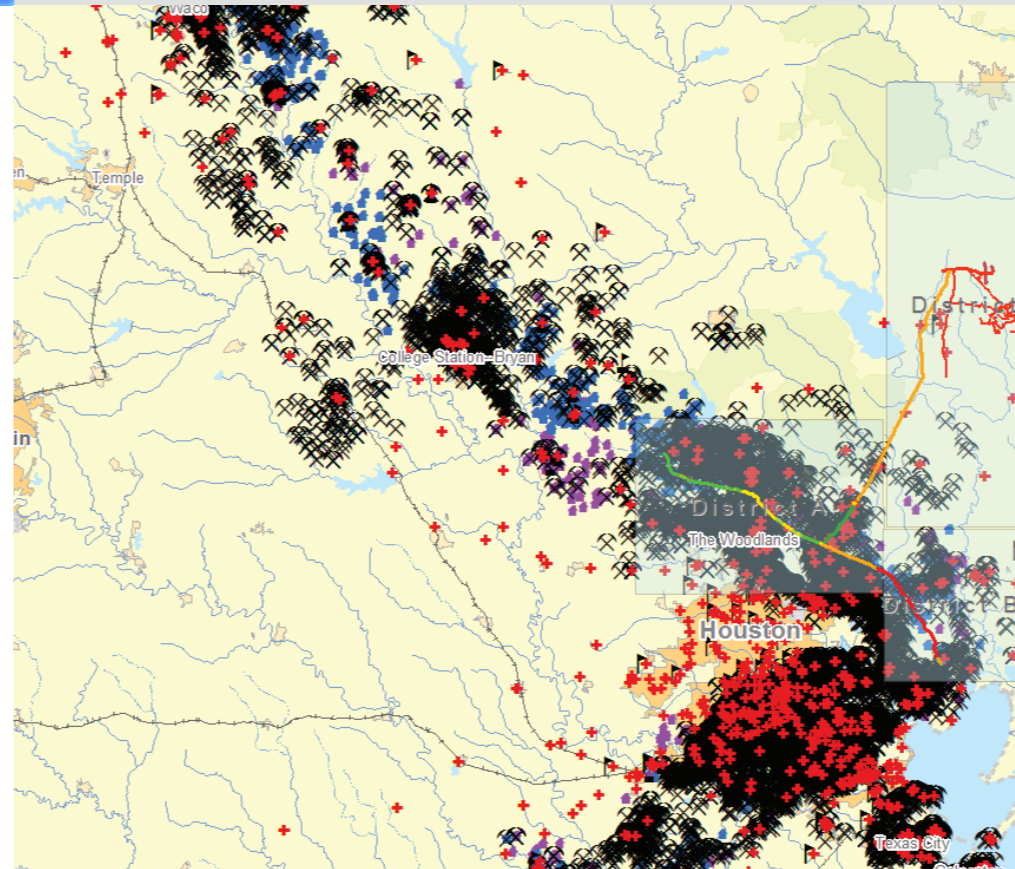
Intrepid users are guided through the processes and functions required for editing and maintaining pipeline data. These management functions include:

- Centerline creation and editing
- Pipeline re-routes
- Inline replacement
- Retirement/abandonment
- Facility details editing
- Add/edit site locations

### Data Analytics

Intrepid users are guided through the processes and functions required for editing and maintaining pipeline data. These management functions include:

- Query
- Establish Regulatory Compliance
- Produce Maps
- Report
- Import & Export Data



### Mobility

For that reason, the mobility of an asset management system is paramount. Whether collecting data in the field or viewing it from a satellite location, Intrepid provides the mobility that your staff needs to function:

- ccFirstSite - AsBuilt
- O&M Reports
- Mobile Asset Viewer

### PDFs for Download

NAME.PDF	NAME.PDF	NAME.PDF
NAME.PDF	NAME.PDF	NAME.PDF
NAME.PDF	NAME.PDF	NAME.PDF